

## ME2-O<sub>2</sub> Gas Sensors Manual

### 1 Feature

ME series O<sub>2</sub> sensors have low consumption, mini size, high sensitivity, wide range of linearity, and better anti-jamming capacity, good reproducibility, stability and reliability ect advantage. It is electrochemical sensor widely suits for mine, industry and environmental protection field ect .



### 2 Application

Type	Detecting Object	Use	Remark
ME2-O <sub>2</sub>	O <sub>2</sub>	Detecting O <sub>2</sub> in industry 、 mine and environmental protection field	

### 3 Feature

#### 3.1 Parameter

##### 3.1.1 Basic feature

Type	ME2-O <sub>2</sub>	
Measurement Range	0-25%vol	Remark
Output signal	0.250±05mA(空气中)	RL=100Ω
Reproducibility	Output signal ±2%	
Response time(t <sub>90</sub> ) s	≤30	
Signal attenuation	≤2%	/month
Zero drift (ppm)	≤0.1%vol	Clean air
Temperature range (℃)	-20~+50	
Temperature drift (ppm)	≤0.1%vol	20~50℃
Humidity range	≤95%RH	
Pressure range (kPa)	90~110	
Storage temperature (℃)	0~20	recommendatio
Storage period (month)	6	
anticipated using life (month)	>24	
Max detecting concentration	30%vol	

### 3.1.2 Products external dimension

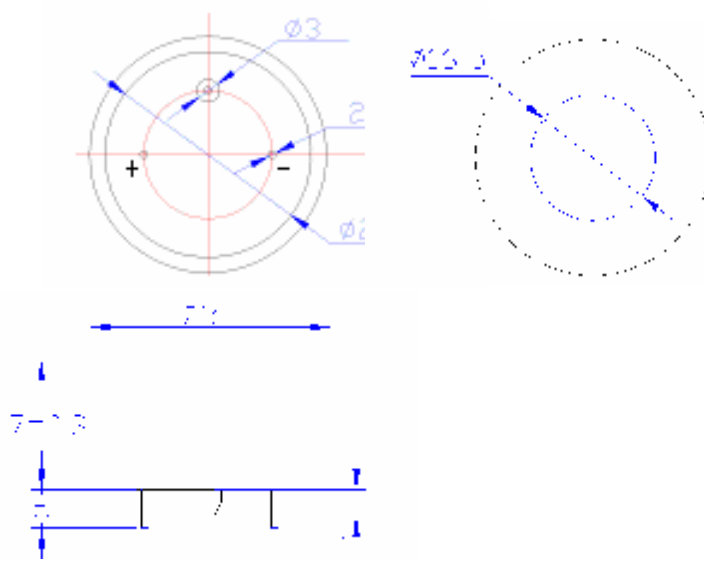


Chart1Products

## 3.2 Gas sensitivity

### 3.2.1 ME2-O<sub>2</sub> type electrochemical sensor concentration response characteristic curve

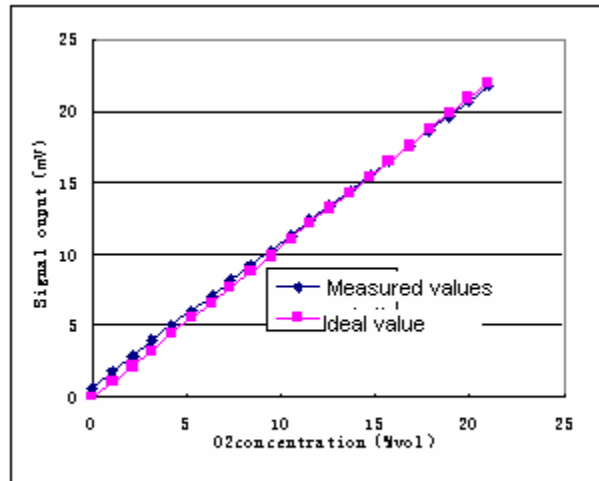


Chart 2 sensitivity curve

### 3.2.2 ME2-O<sub>2</sub> type electrochemistry sensors' response , resume time and output voltage relation curve

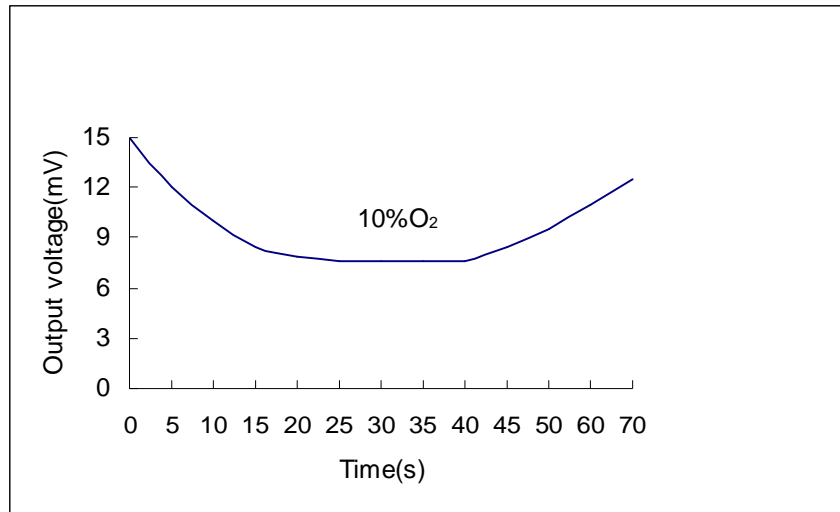


Chart 3.response and resume curve

### 3.2.3 Temperature characteristic

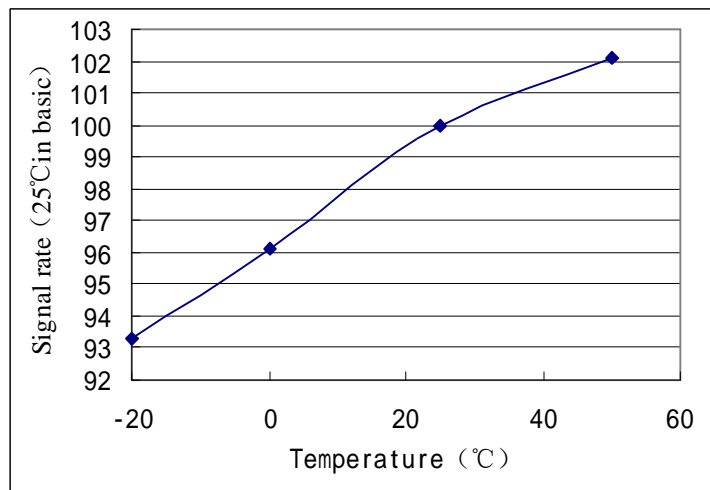


Chart 4. Temperature curve