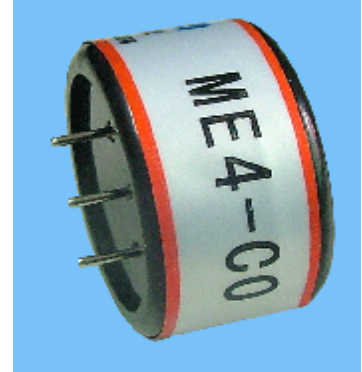


# ME4-CO Gas Sensors Manual

## 1 Feature

ME series CO sensors have low consumption, small size, high sensitivity, wide range of linearity, and better anti-jamming capacity, good reproducibility, stability and reliability ect advantage. It is electrochemical sensor widely suits for mine, industry and environmental protection field ect .



## 2 Application

Type	Detecting Object	Use	Remark
ME4-CO	CO	Detecting CO in industry, mine and environmental protection field	

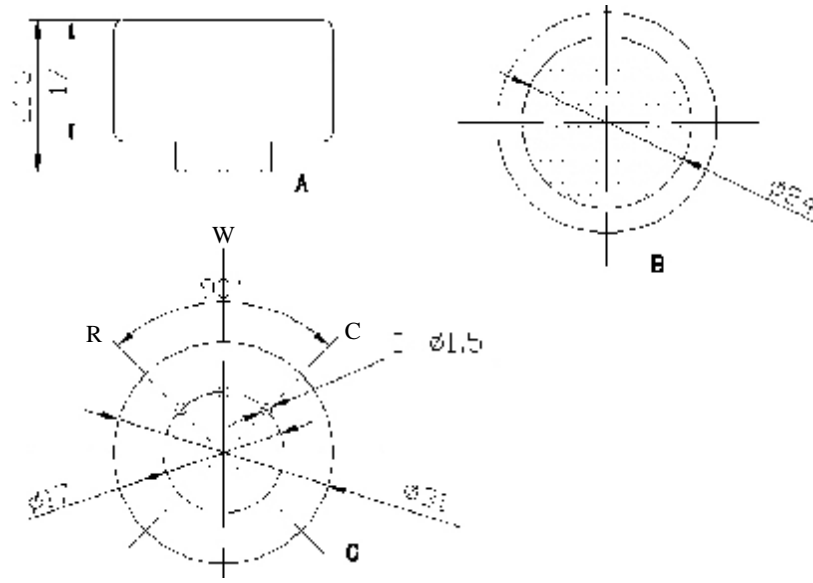
## 3 Feature

### 3.1 Parameter

#### 3.1.1 Basic feature

Measurement Range	0-500ppm	0-1000ppm	remark
Sensitivity( $\mu$ A/ppm)	0.10 $\pm$ 0.02	0.06 $\pm$ 0.02	
Reproducibility	Output signal $\pm$ 2%	Output signal $\pm$ 2%	
Response time( $t_{90}$ ) s	$\leq$ 30	$\leq$ 30	
Signal attenuation	$\leq$ 2%	$\leq$ 2%	/month
Zero drift (ppm)	-5~10	-5~10	Clean air
Temperature range (°C)	-20~+50	-20~+50	
Temperature drift (ppm)	$\leq$ 10	$\leq$ 10	20~50°C
Humidity range	$\leq$ 95%RH	$\leq$ 95%RH	
Pressure range (kPa)	90~110	90~110	
Storage temperature (°C)	0~20	0~20	recommendatio
Storage period (month)	6	6	
Anticipated using life (month)	>24	>24	
Max detecting concentration	1000	2000	

### 3.1.2 Products external dimension



A—left view B—planform C—upward view

Chart 1. products external dimension

### 3.2 Gas sensitivity

#### 3.2.1 CO Electrochemical sensor concentration response characteristic curve

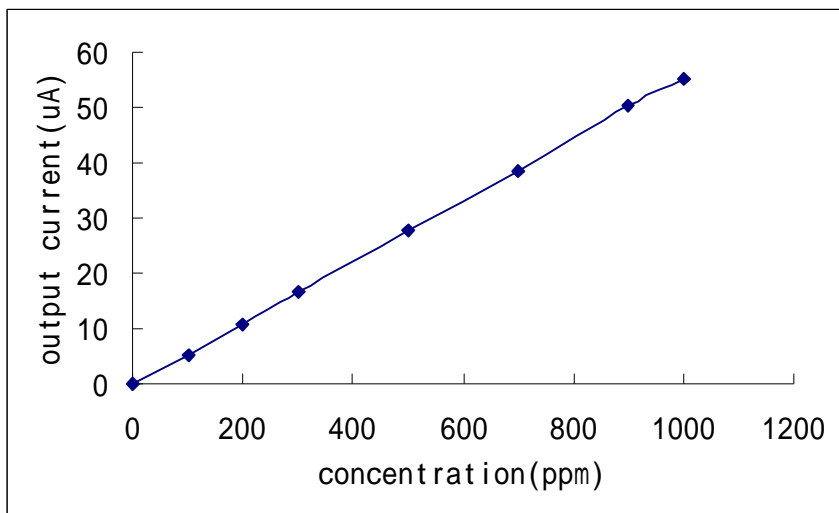


Chart 2 .sensitivity curve

### 3.2.2 ME4-CO type electrochemistry sensors' response, resume time and output current relation curve

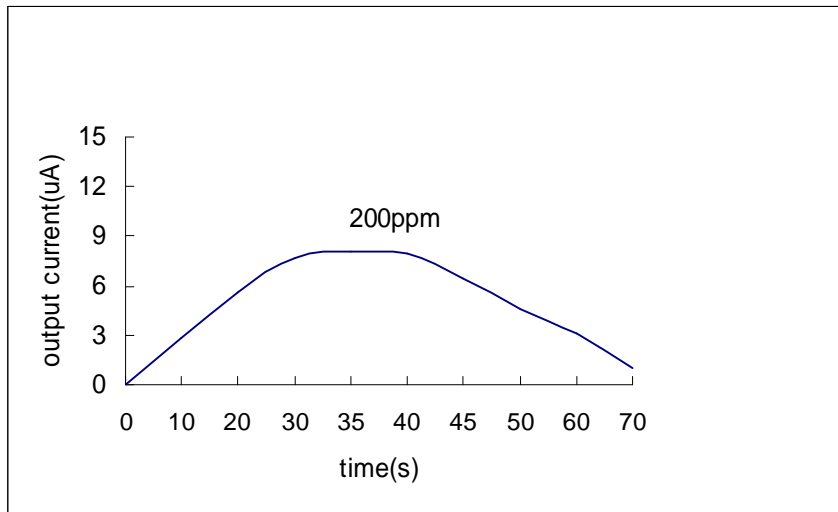


Chart 3.response and resume curve

### 3.2.3 Temperature characteristic

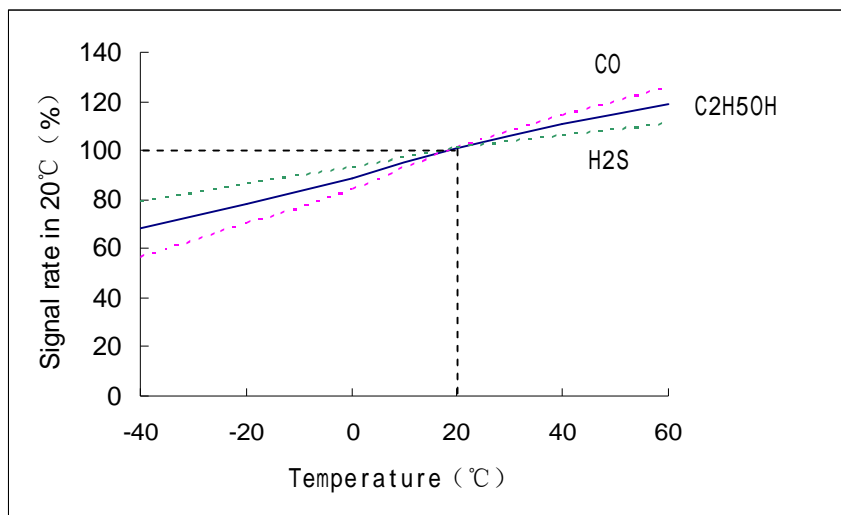


Chart 4. Temperature curve