

ME4-H₂ Gas Sensors Manual

1 Feature

ME series H₂ sensors have low consumption , small size, high sensitivity, wide range of linearity , and better anti-jamming capacity, good reproducibility, stability and reliability ect advantage. It is electrochemical sensor widely suits for industry and environmental protection field ect .



2 Application

Type	Detecting GAS	Application	Remark
ME4-H ₂	H ₂	Detecting H ₂ in industry and environmental protection field	

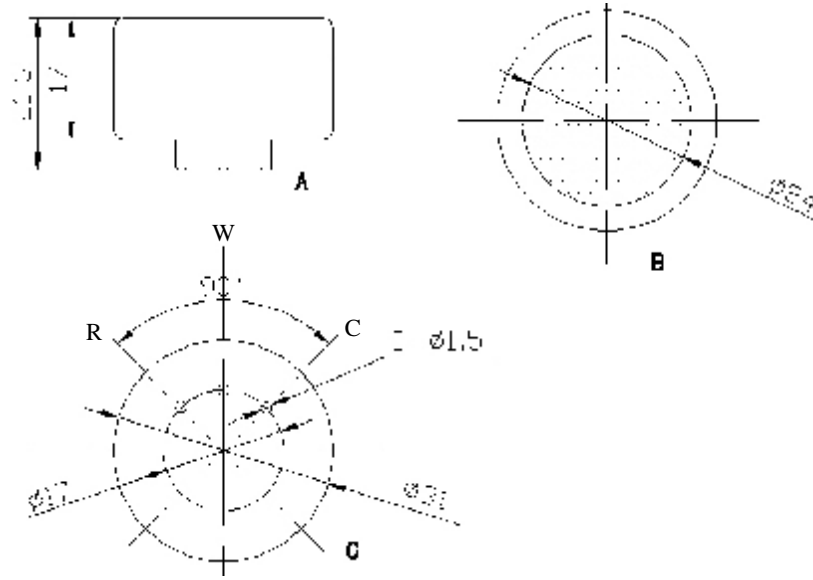
3 Feature

3.1 Parameter

3.1.1 Basic feature

Type	ME4-H ₂		
			Remark
Measurement Range	0-500ppm	0-1000ppm	
Sensitivity(μA/ppm)	0.05±0.01	0.03±0.01	
Reproducibility	Output signal±2%	Output signal±2%	
Response time(t ₉₀) s	≤30	≤30	
Signal attenuation	≤2%	≤2%	/month
Zero drift (ppm)	-10~10	-10~10	Clean air
Temperature range (℃)	-20~+50	-20~+50	
Temperature drift (ppm)	≤10	≤10	20~50℃
Humidity range	≤95%RH	≤95%RH	
Pressure range (kPa)	90~110	90~110	
Storage temperature (℃)	0~20	0~20	Recommendati
Storage period (month)	6	6	
Anticipated using life (month)	>24	>24	
Max detecting concentration	1000	2000	

3.1.2 Products external dimension



A—left view B—planform C—upward view

Chart 1. products external dimension

3.2 Gas sensitivity

3.2.1 ME4-H₂ type electrochemical sensor concentration response characteristic curve

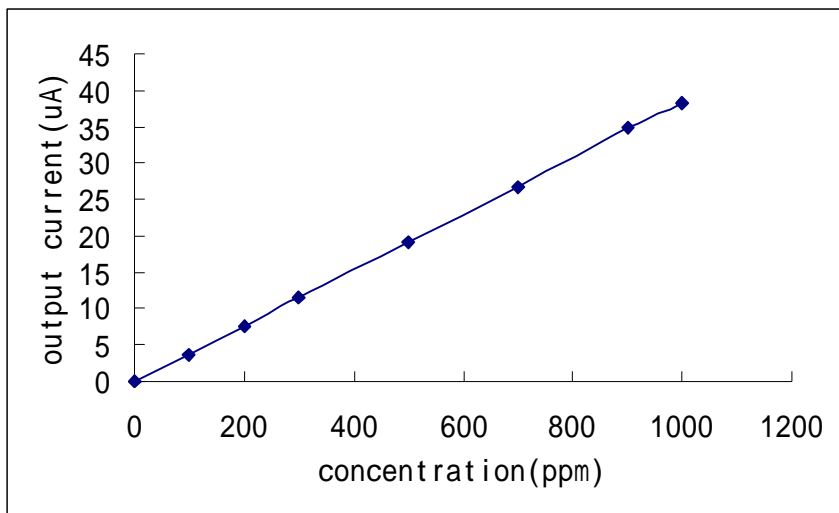


Chart 2 .sensitivity curve

3.2.2 ME4-H₂ type electrochemical sensor response 、resume time and output current relation curve

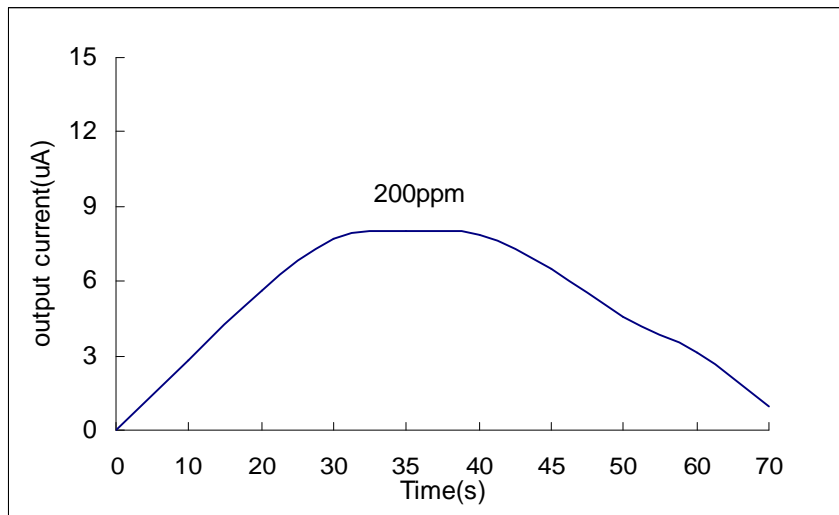


Chart 3.response and resume curve

3.2.3 Temperature characteristic

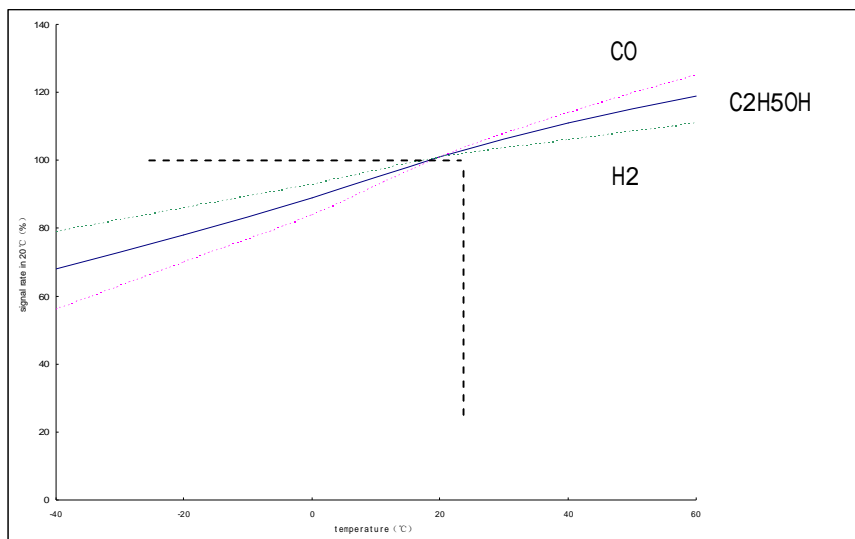


Chart 4. temperature curve